

la perfumería

de Mercadona

CHRISTMAS 2021



THE BEST

to give the best





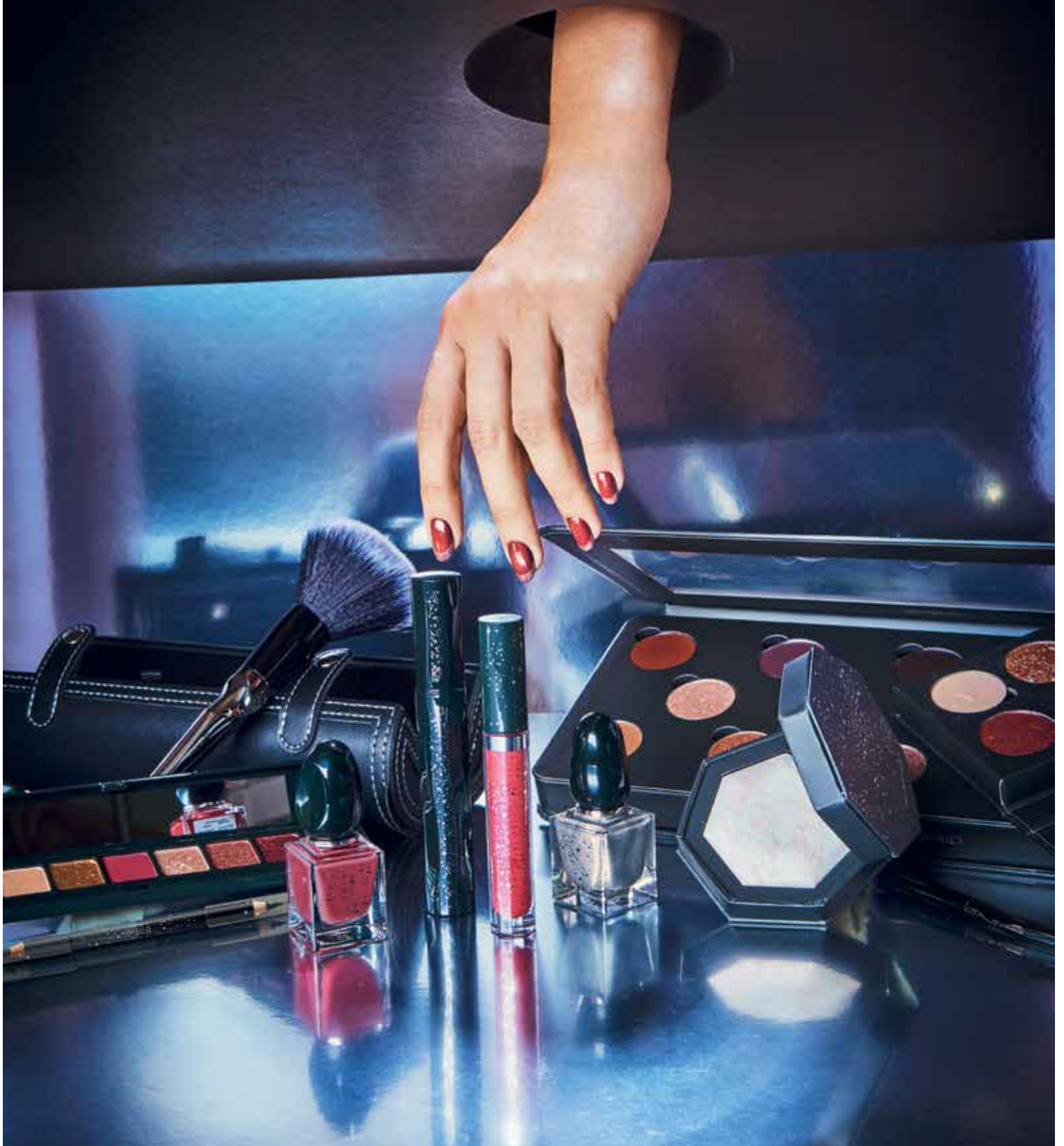
MY SOUL ENCHANTED

for him & for her



COSMIC

deliplus
COLOR



CONTENTS

HOW WE DO IT

06 The best to give the best

MAKE-UP ZONE

10 Cosmic make-up

BEAUTY AND WELL-BEING

16 “Skin tune-up” programme

LATEST NEW PRODUCT

22 Make-up Essentials

24 Personalise your perfume



GIVE THE BEST

- 26** Romantic chic
- 28** Classic elegance
- 30** In the key of cosmopolitan...
- 32** Blue Christmas
- 34** Magical Christmas
- 38** Time to cook!

Written by: MERCADONA S.A.
Polígono Industrial Fuente del Jarro
C/ Ciudad de Liria, 5. 46988 Paterna / Valencia
Published by: Ediciones ELCA
Printed by: Jiménez Godoy
Copyright number: TO-0789-2008

The products that appear in this magazine correspond to Mercadona's standard selection of products. Some products may be unavailable due to space restrictions. Please ask our staff.
Free copy. Sale or marketing is prohibited.
© The owner of the magazine is MERCADONA, S.A. All rights reserved.
Unauthorised full or partial use and/or reproduction of the magazine or the brands and/or logos is prohibited.



T H E B E S T *to give the best*

The essence of value is based on the constant pursuit of perfection. This year, the Mercadona Perfumery is taking on an unprecedented challenge, offering top-quality products, such as the Cosmic Shine collection, created and developed by the world's best specialists. With this achievement of excellence in our work, we encourage you to join our great little revolution: give your best to make magic happen. Be there for your loved ones, listen with your eyes, and think of that special something to make the people you love most feel special.



LA PERFUMERÍA
DE MERCADONA

SEE THE TIMELINE FOR THE CREATION AND PRODUCTION OF COSMIC SHINE BOTTLES

We begin the process



The design

Starting with the same bottle, the great challenge of this project was to play with the design to give it an innovative look.



COSMIC SHINE



Extra White glass

Our **Cosmic Shine** bottles are made from a top-quality glass called Extra White. This glass is prized for its shine and transparency, reminiscent of diamonds, giving it a very luxurious, majestic and noble appearance.



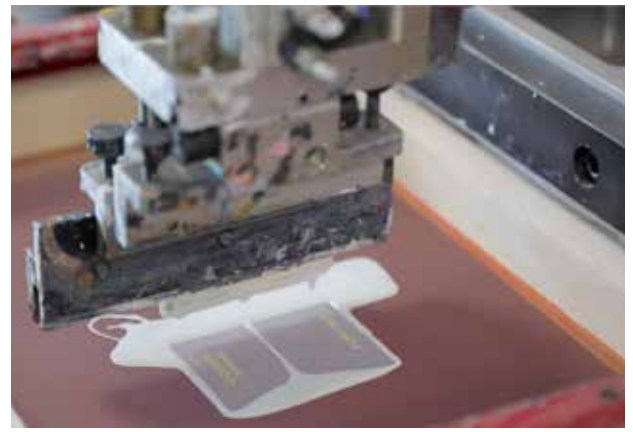
3 months later



The manufacturing

First, the raw materials are weighed at the mixing plant. There, they are poured into silos, diluted, and put into a water bath at 1400°C, where they are melted to a uniform texture.





The decoration

The enamel used to decorate the bottles is called Jet Metal and it is applied in three phases: first the base, then the silver enamel and then the final colour.

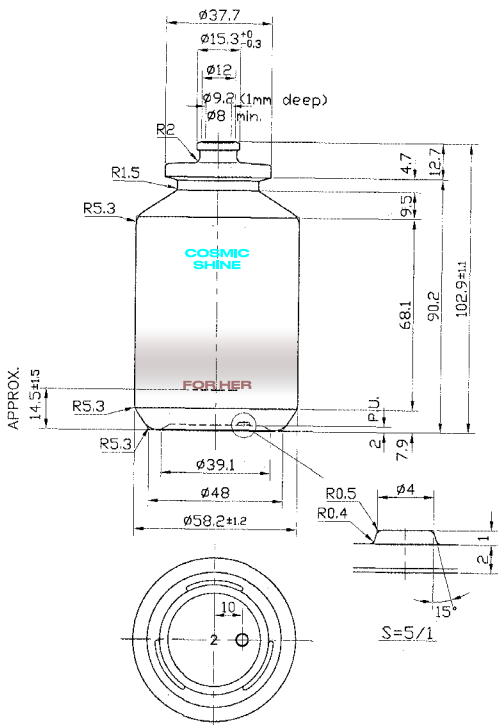
The colours

We had many discussions about the finishes, the technologies to be used, and colour selections, testing up to ten different colour samples.



4 months later

6 months later



5 months later



The prototype

Samples are made piece by piece at our development centres to define the first prototype mould to be manufactured. Finally, we arrive at the definitive mould, the one we have been looking for.

Packaging

The **Cosmic Shine** packaging combines precious metals—in silver and pink gold—giving it a galactic and futuristic appearance, to get that outer-space look that transports us to places beyond the stars. Its surface is delicate, shiny and elegant.

The translucent spherical lid is reminiscent of a spacesuit, an essential piece of equipment for any interstellar journey, while the understated and expanded fonts contribute to the futuristic language and complete the Cosmic Shine design.



This Christmas...
we give you **the best**
so you can **give the best**
of yourself.

Final result

What does Cosmic Shine smell like?

Mandarin, grapefruit, lemon, black peppercorn, mint, ginger, green apple, ambergris, vetiver, sandalwood, and cedar...

Cosmic Shine for him has aromas of wood, citrus, spices and amber. Meanwhile, the women's fragrance is radiant, contrasting and optimistic.

Pink grapefruit, mandarin, pear granita, pink peppercorn, orange blossom, Bulgarian rose, cedar, tonka bean, and bourbon vanilla are some of its ingredients.



Cosmic Make-Up



This Christmas season, get an infinite range of possibilities for festive days and nights. Discover the **Cosmic collection**, as brilliant as the cosmos!

Party day

- ✓ Eyeshadow no. 01 in matte terracotta from the Cosmic Mix-and-match eyeshadows kit (6) in the crease.
- ✓ Eyeshadow no. 07 in metallic copper from the Mix-and-match eyeshadows kit (6) on the lid and lower lash line.
- ✓ Cosmic mascara (5).
- ✓ Cosmic highlighter (4).
- ✓ Nail polish no. 996 in terracotta and no. 997 in glitter.
- ✓ Cosmic Lips matte liquid (3) with the "bitten lips effect".
- ✓ Blusher.
- ✓ Bronzer for contouring.

A FINAL TOUCH

The turban with metallic touches for that party look.



1
Eyeshadow palette

9 colours of matte, satin and metallic eyeshadows.

2
Duo eyeliner

2 colours: black and silver-grey with glitter.



3

Cosmic Lips

Discover the long-lasting matte liquid that transforms when it comes in contact with your lips. How? Apply it, let it dry and press your lips together. Its matte texture transforms, almost instantaneously, into an elegant and resplendent liquid. A true metamorphosis for the lips!



4
Highlighter

With a velvety texture and multi-shimmer finish in diamond format. Apply it with a large brush to brighten the cheeks, neckline and shoulders, or with a small brush for smaller areas like the brow bone and the bridge of the nose.

5

Mascara

Definition and modular volume.



6

Mix-and-match eyeshadows kit

It contains 12 matte, satin and metallic eyeshadows, as well as a smaller pallet where you can put your favourite colours to take them with you everywhere. The combinations are infinite!



7

Cosmic brushes set

It includes all the tools you need for a complete make-up look: powder brush, blender brush, angled brush, eyeshadow brush and make-up sponge. And it comes with a round case for easier storage and transport.





Cat's eyes

- ✓ Eyeshadow no. 02 in matte chocolate from the Cosmic eyeshadow palette (1) on the lid.
- ✓ Eyeshadow no. 01 in matte terracotta from the Mix-and-match eyeshadows kit (6).
- ✓ Eyeshadow no. 04 in metallic antique gold from the Cosmic eyeshadow palette (1).
- ✓ Duo eyeliner (2) in black with glitter.
- ✓ Eyeshadow no. 02 in matte chocolate from the same pallet (1) to mark the ends of the lower lashes, creating the "cat's eye" look.
- ✓ Cosmic mascara (5).
- ✓ Cosmic Lips matte liquid (3) with the "bitten lips effect".
- ✓ Blusher.
- ✓ Bronzer for contouring.
- ✓ Cosmic highlighter (4).

Cosmic manicure

Start by applying nail polish **no. 996 in terracotta**. When it is fully dry, apply a layer of **no. 997 in glitter** to completely transform the finish and colour of your manicure.



WORDS FROM AN EXPERT

If you have brown, light brown or black eyes, choose darker shadows, coffee colours and golds to make them pop. Meanwhile, light eyes are enhanced by reddish and orange-coloured eyeshadows

Metallic vs. Matte



- ✓ Eyeshadow no. 10 in metallic burgundy from the Mix-and-match eyeshadows kit (6) as a base.
- ✓ Eyeshadow no. 02 in matte chocolate from the Cosmic eyeshadow palette (1) to mark the lower lash line.
- ✓ Eyeshadow no. 01 in matte beige from the same palette (1) to highlight the corner of the eye.
- ✓ Cosmic mascara (5).
- ✓ Cosmic Lips matte liquid (3) with the "bitten lips effect".
- ✓ Blusher.
- ✓ Cosmic highlighter (4).

"Bitten lips effect"

We show you how to get them:

1. Nourish the lips with a moisturising balm.
2. Give them a touch of colour with the **Cosmic Lips** matte liquid. Apply it with gentle dabs in the middle of the upper and lower lips.
3. Blend it with your finger, moving outwards and stopping before you reach the corners. *C'est fini!*

- ✓ Eyeshadow no. 05 in matte cherry from the Cosmic eyeshadow palette (1) on the lid.
- ✓ Eyeshadow no. 02 in matte chocolate from the same palette (1) to line the eyes.
- ✓ Duo eyeliner (2) in black with glitter.
- ✓ Cosmic mascara (5).
- ✓ Cosmic highlighter (4).
- ✓ Cosmic Lips matte liquid (3) with the "bitten lips effect".
- ✓ Blusher.
- ✓ Bronzer for contouring.

Day vs. Night



On mature skin, choose make-up foundations that leave the skin hydrated and supple. Don't forget to use face cream before applying make-up to the face.

- ✓ Eyeshadow no. 06 in beige from the Mix-and-match eyeshadows kit (6).
- ✓ Duo eyeliner (2) in silver grey with glitter, well-blended along the upper lash line.
- ✓ Cosmic mascara (5).
- ✓ Cosmic Lips matte liquid (3).
- ✓ Cosmic highlighter (4) on the brow bone and neckline.
- ✓ Blusher.

TOP TIP

For dark eyeshadow looks, we recommend applying eye make-up first, so the darker colours don't smudge the foundation.

- ✓ Eyeshadow no. 09 in matte black from the Cosmic eyeshadow palette (1) blended along the lid.
- ✓ Duo eyeliner (2) in silver grey with glitter around the eyes.
- ✓ Cosmic mascara (5).
- ✓ Cosmic Lips matte liquid (3).
- ✓ Cosmic highlighter (4).
- ✓ Cosmic nail polish no. 996 in terracotta.
- ✓ Blusher.



The eyelashes revolution

Say goodbye to struggling with false eyelashes! Thanks to the adhesive black eyeliner, the only thing you have to do is line your eyes and attach the reusable lashes. It's never been so easy to have great lashes!

- ✓ Eyeshadow no. 01 in matte terracotta and no. 07 in metallic copper from the Cosmic Mix-and-match eyeshadows kit (6).
- ✓ Adhesive black eyeliner + Natural effect false eyelashes kit.
- ✓ Cosmic mascara (5).
- ✓ Cosmic highlighter (4).
- ✓ Cosmic Lips matte liquid (3) with the "bitten lips effect".
- ✓ Blusher.
- ✓ Bronzer for contouring.



Did you know...?

The **Adhesive black eyeliner + Natural effect false eyelashes** kit does not contain latex. The marker format of the eyeliner is perfect for lining the eyes and then attaching the eyelashes. What's more, they are reusable and resistant to sweat and temperature changes.



“Skin tune-up” programme



This Christmas, pamper yourself with the best face care products. Choose the best products for your skin needs and flaunt a healthy and radiant complexion.

You'll shine with your own light!

VITAMIN ENERGY

Vitamin cocktail

In addition to establishing a facial routine adapted to your skin needs, every so often, it's important to incorporate intensive programmes for a deeper treatment. Facial vitamins are the perfect ally to give your skin that extra care it needs to look luminous and revitalised.

Vitamin Energy is an intensive 14-day treatment consisting of seven vitamins in 14 ampoules.

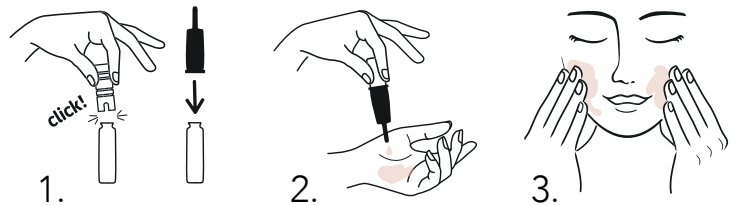
The continued use of this vitamin cocktail prevents and treats the premature signs of ageing. At the same time, it boosts the skin's radiance, providing deep nourishment and hydration.

The result? A more luminous, healthy and beautiful complexion.



INSTRUCTIONS FOR USE

Apply the contents of half an ampoule to the clean and dry skin of the face, neck and neckline. Gently massage it in until fully absorbed. Use one ampoule a day (half in the morning, half at night) before applying the other routine face products.



What are its benefits?

DAYS 1-2



Vitamin B5: Moisturising

Hydrates, soothes and provides a feeling of wellness.

DAYS 3-4



Vitamin B9: Anti-ageing

Combats the signs of ageing, stimulating cellular repair.

DAYS 5-6



Vitamin F: Protection

Helps restore and strengthen the cutaneous barrier, keeping the skin protected and moisturised.

DAYS 7-8



Vitamin H: Firming

Improves the skin's firmness, making it look smoother, tighter and softer.

DAYS 9-10



Vitamin B3: Anti-blemishes

Unifies the tone, reducing spots and blemishes and protecting the skin from pollution and blue light.

DAYS 11-12



Vitamin E: Nourishing

Provides extra nutrition to visibly improve texture.

DAYS 13-14



Pro-vitamin D: Brightening

Boosts the natural radiance of the skin, leaving it more revitalised, supple and plump.

SISBELA REAFIRM

Firm and radiant skin

Two of the first signs of age that are reflected on the face are sagging and lack of elasticity. These are caused by the gradual loss of collagen and elastin, two fundamental components for maintaining firm skin. How to avoid it? Through diet and a facial routine based on substances that stimulate their production, such as organic silicon, the main ingredient in the Sisbela Reafirm line.



EYE CONTOUR CREAM

It works on the skin in this area to reduce signs of tiredness, smoothing wrinkles and instantly brightening the eyes. Its formula is rich in innovative ingredients, including organic silicon, Argireline and vitamin E.

HOW TO USE IT > Apply a small amount of the product morning and night to clean and dry skin. Dab it on using the fingertips until completely absorbed.



12% SILICON SERUM

Firms and reshapes the facial contour thanks to its formula high in organic silicon. This serum also reduces the signs of ageing, deeply moisturising and protecting the skin thanks to its powerful antioxidant effect.

HOW TO USE IT > Add 6 droplets to clean and dry skin, morning and night, gently massaging it in. Remember to apply it before using the face cream from this same line.



What is organic silicon?

An innovative active ingredient with powerful firming properties that acts directly on collagen and elastin production. Its continued use improves the firmness, elasticity and hydration of the skin while protecting it from free radicals.

REVITALISE & RESTRUCTURE CREAM

Formulated with the exclusive RNA/DNA complex and organic silicon, this face cream, suitable for all skin types, reduces the visible signs of age, softens wrinkles and increases the skin's firmness.

HOW TO USE IT > Include it in your morning and night routine, on a clean and dry face, gently massaging it in until fully absorbed.

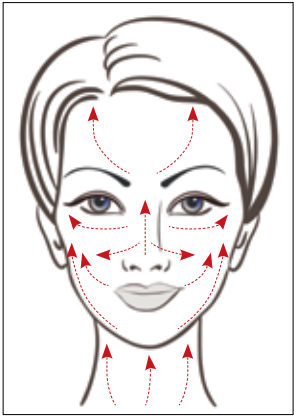


Pre-party face massage

Intensify the firming action of the line with this face massage. You will get a lifting effect while reactivating blood circulation and helping reshape the facial contour.

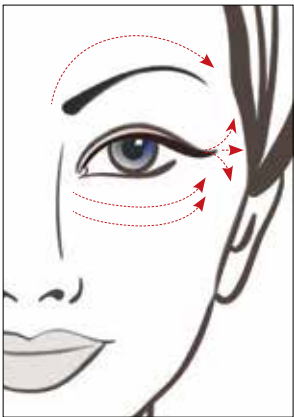
Give it a try before your Christmas events.

You'll notice a difference!



1.

1 Forehead, chin and cheeks. Apply the serum and the face cream with a gentle upward massage. On the forehead, from the brow to the hairline. On the chin, from the tip of the chin to both sides. And on the cheeks, from the nose to the temple in an upward and diagonal motion.

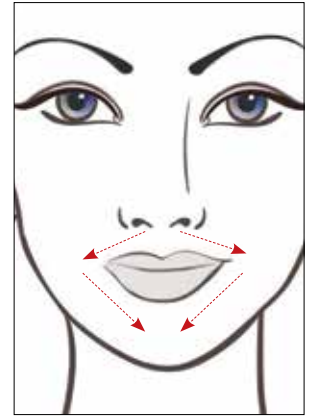


2.

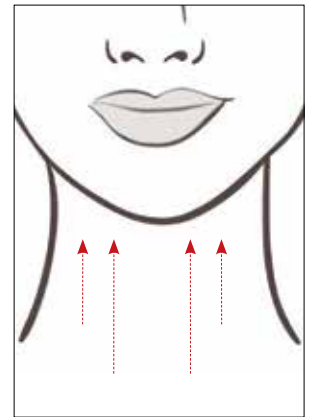
2 Around the eyes. Massage around the brows in a circular motion from the inside to the outside corners. Massage under the eyes in an upward motion, from the tear duct to the temples, to relax and smooth expression lines. Pay special attention to wrinkle-prone areas to prevent the dreaded crow's feet.

3 Lips. In this area, we will do two phases of movement. First on the upper lip, from the centre to the left and from the centre to the right. On the lower lip, go in reverse, from the corners to the centre of the lips.

4 Neck and neckline. Always in an upward motion.



3.



4.



A FINAL TOUCH

Gently tap your fingertips all over your face to reactivate blood circulation.

REGEN SKIN

Regenerate your skin

Dull, dehydrated and lifeless skin? Uneven tone, spots and expression lines? These are the first signs of ageing. With the passing of years, the skin's capacity for cellular regeneration diminishes. A facial routine comprised of cosmetic products that encourage this process is essential for preventing and slowing ageing.

RICH TEXTURE DAY CREAM

Dull, dehydrated and lifeless skin? Uneven tone, spots and expression lines? These are the first signs of ageing. With the passing of years, the skin's capacity for cellular regeneration diminishes. A facial routine comprised of cosmetic products that encourage this process is essential for preventing and slowing ageing.



BE SUSTAINABLE

Reuse your Regen Skin cream jar: when the product runs out, remove the empty cartridge and insert the refill. Recycle your cosmetics packaging and help make a better planet!

COLLAGEN SERUM

Perfect for improving the firmness, brightness and elasticity of the face. Its formula, rich in collagen and vegetable stem cells, fights the signs of ageing and activates the cellular regeneration process.



RICH TEXTURE NIGHT CREAM

Designed to make the most of the cellular renewal process that occurs every night in our skin, this cream helps to slow and prevent the signs of ageing thanks to its formula rich in active ingredients, such as Bakuchiol, a plant-derived substance that improves the texture and unifies the tone of the skin.



TIP Intensify the regenerating action of Regen Skin creams by applying them using a **firming** massage in an upward motion in the morning, and a **draining** massage in a downward motion at night.

Toiletry bags



* Different sizes and models to choose from.

MAKEUP ESSENTIALS



The excitement of opening every single box. 12 products essential for your make-up routine. Ready to dazzle?

1. **Liquid eyeliner.** Line your eyes with its precise applicator.
2. **Vanilla-scented moisturising lip balm.**
3. **Eyeshadow palette.** 4 earth tones essential for any make-up look.
4. **Red nail polish.**
5. **Pressed powder bronzer.**
6. **Pressed powder blusher.**
7. **Eyeshadow brush.** Apply and blend all your eyeshadows, whatever their texture and finish.
8. **Nail file.** Flaunt a perfect manicure with this double-sided file: one side for shaping and the other for polishing and perfecting.
9. **Nude nail polish.**
10. **Pressed powder highlighter.**



11. **Black wood eye pencil.** Perfect to use on the inside and outside of the eyes.
12. **Liquid lipstick** that is quick-drying with a liquid texture.



Beauty tip

Apply it to the top of the cheek for a glowing effect.



“Like” your favourite accessory

Headbands, turbans, clips, scrunchies... Different models to choose from.



Personalise your perfume

Your art, your perfume, a case with three fragrances based on the concept of layering or the art of mixing aromas. Let your imagination soar and create your own fragrance.



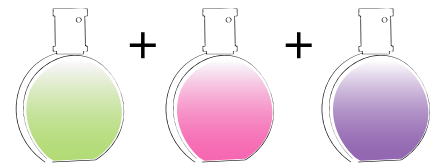
The fragrances

Dravita: Main fragrance with oriental and sweet notes. It will be the base for all your combinations.

Amazona: Aroma with Oriental and fruity notes.

Magnolia Blanche: Belongs to the Chypre Floral olfactory family.

How to use them



Mix the aroma of two or even three fragrances together to create a completely new sensory experience without needing to buy a new perfume. Note all the options:

1. **Dravita + Magnolia Blanche + Amazona**
2. **Dravita + Magnolia Blanche.** Perfect for daytime, Magnolia mixes very well with the floral and fruity notes of the base fragrance for a much fresher result.
3. **Dravita + Amazona.** The perfume is perfect for the evening as mixing it with the base enhances the sweet toasty note in combination with the woody notes.
4. **Dravita**
5. **Magnolia Blanche**
6. **Amazona**



GIVE the best

Christmas is synonymous with sharing. We share time, gifts, smiles... Our loved ones deserve the best. Make the most of this magical time of the year to surprise them with the perfect gift. Create unique and unforgettable moments with memories that will last a lifetime, and enjoy the magic of Christmas.

ROMANTIC CHIC



1 Capitulo Chypre Femme
Eau de toilette, bath gel
and body lotion.

2 Rose Nude
Eau de parfum for women,
body lotion, hand cream and
jewellery box with mirror.

3 Vuela
Eau de toilette for women,
body lotion, bath gel and
hand cream.



Jewellery box in sight! Divided into two compartments with a cute little mirror, the **Rose Nude** fragrance box will become a favourite place to keep your accessories: rings, necklaces, earrings...



4 Elección Pour Femme
Eau de parfum, 20 ml eau de parfum and hand cream.

5 Soplo Intense
Eau de toilette for women, body lotion and toiletry bag with multi-position handles.

6 Sweet Beauty Set
Eau de parfum for women and lip balm.

Give your toiletry bag with the fuzzy **Soplo Intense** fabric a second life. Wear it cross-body to give a chic touch to your winter looks.



6



CLASSIC ELEGANCE

1 Ella Pour Femme
Eau de parfum, body lotion and hard-sided toiletry bag/jewellery box with an inner pouch.

2 Comotú Plata
Eau de toilette, for men, bath gel and deodorant spray.

3 Él Pour Homme
Eau de parfum, 20 ml perfume spray and gel-shampoo.

4 Comotú Oro
Eau de toilette for women, eau de toilette mini and lantern with 3 candles.

The **Ella** fragrance pouch turns into an adorable candy box clutch that you can flaunt at all your Christmas events. Spice up any total-black look with its burgundy tones. You'll look divine! ★



4



5



6



Do you need a "carry-all" to take with you everywhere you go? The **Comotú Fuerza** and **Amor** cases are perfect for storing your essentials. And, you can attach it to your suitcase to hold your personal documents... Super practical!

5 Comotú Fuerza
Eau de toilette for men
eau de toilette
mini and case.

6 Comotú Amor
Eau de toilette for women,
eau de toilette mini
and case.

IN THE KEY OF COSMOPOLITAN...

- 1 **Hey, Beauty!**
Eau de parfum spray for women, bath salts and body scrub.
- 2 **Glamour**
Eau de parfum for women and body lotion.
- 3 **Capítulo Fougère Homme**
Eau de toilette, bath gel and aftershave.
- 4 **Top Mimos**
No-rinse hand cleanser gel and moisturising cream.
- 5 **Extra Time For Him**
Eau de toilette, shower gel and shampoo.
- 6 **You Homme**
Eau de toilette mini (22 ml).
- 7 **You Femme**
Eau de toilette mini (22 ml).



Tips for wrapping gifts

This Christmas take it a step further, making each gift special even before it's opened. Here are some tips to make your gifts stand out under the tree.



Leave your mark. The mini format of the **You Homme** and **You Femme** fragrance is perfect to always keep on you, so your scent lasts all day long.



★ Use beautiful **wrapping paper**. If you choose a solid colour, spice it up with a decorative element: bows, string, Christmas bobbles, satin ribbon... You can use the **Top Mimos** metal box to store all your decorations.

★ If you are good at **calligraphy**, make the most of your artistic talents to personalise your gifts with the names of their recipients. You'll give them a handmade and very original touch. They'll love it!

★ You can also add a **card or label** where you write the name of the person the gift is for and a short message that can be funny, emotional and/or affectionate. It's up to you!

BLUE CHRISTMAS

1 Precision System 6
Get a perfect shave with no irritations using this six-blade razor (plus one precision blade on the back). The pivoting and swinging head lets it adapt to all the contours of the face. It comes with nine replacement blades and a travel base.

2 Blue Shine For Her
Eau de parfum, 20 ml eau de parfum and body lotion.

3 Blue Shine For Him
Eau de parfum, 20 ml eau de parfum and bath gel.





- 4 **Misty Wood For Men**
Eau de toilette, bath gel, no-gas deodorant and aftershave.
- 5 **Around the world**
Travel Kit for him.
Eau de toilette and bath gel.
- 6 **Gesto**
Eau de toilette for men, bath gel, no-gas deodorant and aftershave.



Give the **Blue Shine** perfume packaging a second life. Their beautiful blue boxes illustrated with motifs of hydraulic tiles are perfect for storing objects and decorating your home.



Magical Christmas

The Christmas holidays are even more special if there are children at home. The excitement around opening presents, decorating the tree, singing carols, making biscuits, eating chocolate... Any plan with little kids becomes a lovely and heart-warming family experience.

This year, you can give Santa and the Three Wise Men a sweet surprise. How? Arrange delicious chocolate coins marking the path to the Christmas tree, showing them where to leave the precious gifts. They'll love it!



Fornite
Eau de toilette, toiletry bag and vinyl sticker.



Spiderman
Eau de toilette and bath gel.



Mickey and friends
Eau de toilette and bath gel.

Beauty kits with their favourite characters



Among us
Eau de toilette and surprise pouch with official keyring with different characters to collect.

Grips for your video game controllers!



Minecraft
Eau de toilette, 2 grips and toiletry bag.



Color up!

Metal box that can be used as a school case. It contains: 12 eyeshadows, blusher, 6 lip glosses, eyeshadow applicators, blusher brush, hair band and mirror.



The three-level case can be used to store your coloured pencils, stickers, rubber eraser...



Frozen Beauty Blockbuster Set

2 lip balms, 3 lip glosses, 2 lip shines, 3 nail polishes, toe separator, 2 eyeshadow palettes, sticker set and rings.



Frozen

Eau de toilette, lip gloss, lip balm, 2 eyeshadows and applicator.

I want it!



Unicorn Power Color up!
MAGICAL time



Tokidoki

Eau de toilette, keyring and lip gloss.

Unicorn Power Premium Beauty Case Color Up!

Cosmetics case that contains 5 nail polishes, 2 lip glosses, blusher, 6 eyeshadows, brush, hair band, 2 eye brushes, ring with lip gloss, nail sticker set, stick-on nails and mirror.



Tokidoki

Palette with 15 eyeshadows, blusher, 2 nail polishes, toe separator, file and stickers for decorating nails.



Love My Unicorn Rock

Eau de toilette, nail polish, lip gloss and stickers to decorate the face.

We have the perfect sets for your beauty moment with friends. Mani-pedi and make-up for a fun afternoon.

Mini beauty moment



Unicorn Power Beauty Set Color Up!

Nail file, set of stickers to decorate the nails, 10 stick-on nails, 4 nail polishes, eyeshadow palette with 6 colours and applicator, toe separator and lip balm.



LOL Surprise!

Eau de toilette, purse, nail polish and nail file.



Time to cook!

Baking biscuits is an essential Christmas activity.

Children love doing it, and then you can give them as gifts or enjoy them as a family snack.

Ingredients

- ★ 350 g flour
- ★ 200 g brown sugar
- ★ 150 g butter
- ★ 1 egg
- ★ 1 teaspoon of ground ginger
- ★ 1 teaspoon of baking powder
- ★ 1 teaspoon of ground cinnamon
- ★ ½ teaspoon of ground nutmeg
- ★ 1 pinch of salt

To decorate: 100 g powdered sugar,
1 egg white and dark chocolate

How to make them

- ✓ Mix the flour, sugar, baking powder, salt and spices (ginger, cinnamon and nutmeg) in a bowl.
- ✓ Add the egg and butter and mix it all together. Divide the dough in two and wrap them in plastic wrap.
- ✓ Let them rest in the fridge for approximately one hour. After an hour, roll out the dough well using a rolling pin.
- ✓ Preheat the oven to 180°C while you cut the biscuits into fun shapes: star, Christmas tree, bell. Bake them for 10 minutes, and then let them cool.
- ✓ To decorate them, make a glaze by beating the egg white until stiff and then adding the sugar slowly until well blended. Use a pastry bag or paper cone to decorate the biscuits. Another option is to melt chocolate and use it to decorate.





The best recipes for
Christmas are now
available



HOME MOMENT SPA